

THE FRONTIER

Winter 2002 • Volume VI, Issue I

A Frontier Construction Co. Publication

RESTORATION DIVIDENDS

USGA taps Kahkwa for '04 Amateur

ERIE, Pa. — It would appear the careful work Frontier Construction Co. performed here at The Kahkwa Club has not gone unnoticed.

The Kahkwa Club, where Frontier and architect Ron Forse conducted a thorough green and bunker restoration during 2000, has been chosen to host the 2004 U.S. Women's Amateur Championship, or so the United States Golf Association announced in January.

The 2004 Championship will be played from Aug. 9-14 — so mark your calendars!

The Kahkwa Club was designed by Donald Ross and opened in 1917. The club, however, dates back to 1893 and is listed among the first 100 golf clubs in the U.S. No stranger to national championships, The Kahkwa Club played host to the 1971 U.S. Women's Open, won by JoAnne Carner at even par.

"The Kahkwa Club is excited about renewing its association with the USGA and is looking forward to being the host for the

Continued on page 3



BUILDING TRADITION

The Tradition Course is the newest of three at Ibis Golf & Country Club in Palm Beach Gardens, Fla. Built by Frontier and designed by Steve Nicklaus, all 18 holes opened for private play on Nov. 1, 2001. Holes 12 (above) and 8 are part of a "traditional", out-and-back routing with no clubhouse return after nine.

FRONTIER
CONSTRUCTION
• golf course builders •

WWW.FRONTIERGOLF.COM
724-593-7491

INSIDE THIS ISSUE

• CRANBERRY HIGHLANDS

This beautiful Bill Love design is finished and set to open for play this spring..... **2**

• LONGUE VUE CLUB

Frontier has initiated a restoration project at one of Pittsburgh's most scenic and exclusive private clubs..... **3**

• GETTING OUT, GETTING IN

Frontier has finished its first New England job, just as ground breaks on another in New Jersey..... **4**

NEW BUILD

ABROAD

Shaping to begin at PR's Caguas Real

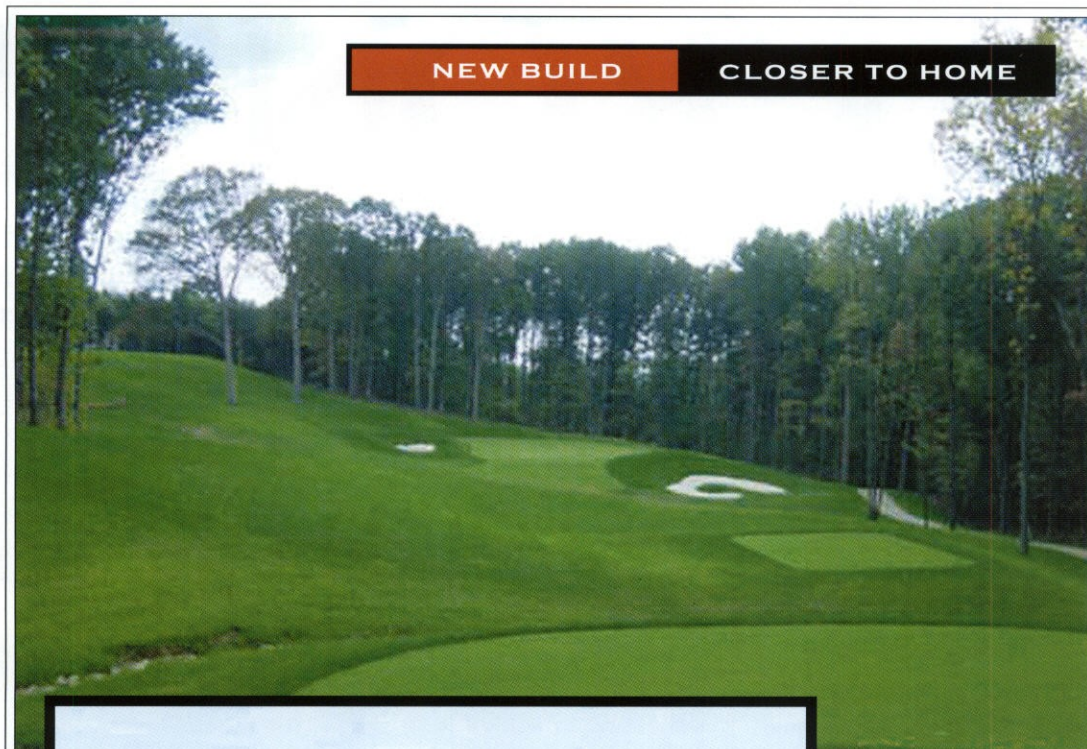
CAGUAS, Puerto Rico — Preliminary earth work is nearly complete and course shaping will begin this spring here at Caguas Real, a \$300 million resort development featuring 18 holes designed by Florida-based architect John Sanford and built by Frontier Construction Co.

Caguas Real is scheduled to open for play in late 2003; when it does, Caguas will be the second 18-hole course built by Frontier on the island of Puerto Rico. Coamo Springs Golf & Tennis Club opened in 1999 near the southern city of Ponce.

Developed by Ventura Properties, Caguas Real — located in the mountainous region some 10 miles south of San Juan — will eventually include 500 home sites, a luxury hotel, an upscale retail block and 18 holes of golf. In addition to course construction, Frontier is overseeing the complicated earth works associated with this ambitious, multi-use development.

"All told, we're moving about 11 million cubic yards of dirt for this project — the golf course accounts for only small portion of that figure, but we've been asked to manage the process to ensure the golf ties in properly," explained Nick Scigliano, president of Frontier. "This is very mountainous land — easily 400 feet of elevation change. So it will take a great deal of work and ingenuity to create suitable platforms for the housing, hotel and golf course."

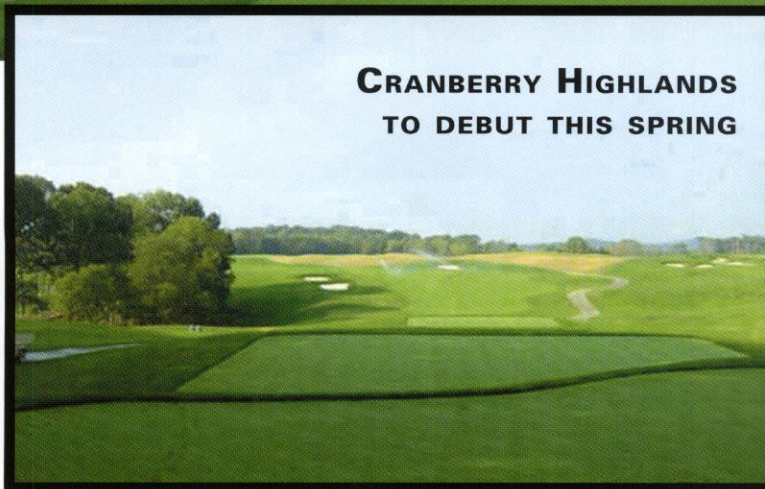
Of primary concern to Frontier, the developers and environmental groups is the Turabo



NEW BUILD

CLOSER TO HOME

CRANBERRY HIGHLANDS TO DEBUT THIS SPRING



Working in its own backyard, Frontier Construction applied the finishing touches this fall to the Bill Love-designed Cranberry Highlands GC. Located in Cranberry Township, Pa., a few miles from Frontier headquarters, this 18-hole muni will go from groundbreaking to grand opening in 18 months.

'We average some 90 inches of rain per year in this area, so course drainage will be a major concern of ours.'

— **NICK SCIGLIANO**
FRONTIER PRESIDENT

River, which flows out of the mountains and through the property. In dry times, the Turabo can be forded on foot. During hurricane season, however, it can rise some 25 feet. To control the Turabo during flood conditions, The Raytheon Corp. of Philadelphia has been retained to engineer a channel and levy scheme, complete with check

dams. Frontier will build up and shape the topside of this levy to accommodate several golf holes.

"No surface-water discharge will be allowed into the channel; all the discharge will be gathered in man-made lakes on the course," Scigliano explained. "That's what we're working on this winter, along with the creation of housing and golf corridors."

The layout at Caguas Real Golf Club will be private, with outside tee times available only to hotel guests. Buena Vista Properties — manager of PGA National Golf Club in Palm Beach Gardens, Fla., among other premier properties — will operate the facility.

Sanford's par-70, 6,500-yard course design "will be what I call

a 'plateau course' because of the severe grades we're dealing with — 2:1 in some places," the architect explained. "Essentially, we've plateaued or terraced the slopes to create tees, fairways and green sites. Of course, the elevation changes have allowed us to create some fantastic golf holes, along with tremendous views on account of the hillside location."

Scigliano noted the terrain at Caguas Real will make erosion control a particularly high priority during construction. "We average some 90 inches of rain per year in this area," he said, "so course drainage will be a major concern of ours."

RENOVATION

ON HIGH

VERONA, Pa.—Frontier Construction Co. broke ground in September here at Longue Vue Club, a one-of-a-kind course and club perched atop the foothills overlooking Pittsburgh.

Working with architect Ron Forse, Frontier is implementing an 18-hole bunker-restoration initiative. The firm will install a state-of-the-art, modified triple-row, Toro irrigation system designed by Brian Vinchesi of Irrigation Consulting, Inc.

Longue Vue is one of Pittsburgh's most unique golfing venues. The par-70, 6,488-yard course was laid out over wildly undulating topography by Robert White in

Frontier & Forse break ground at Longue Vue Club

1920. It provides wondrous views of Pittsburgh and the Allegheny River, and overlooking the course is one of America's most distinctive clubhouses.

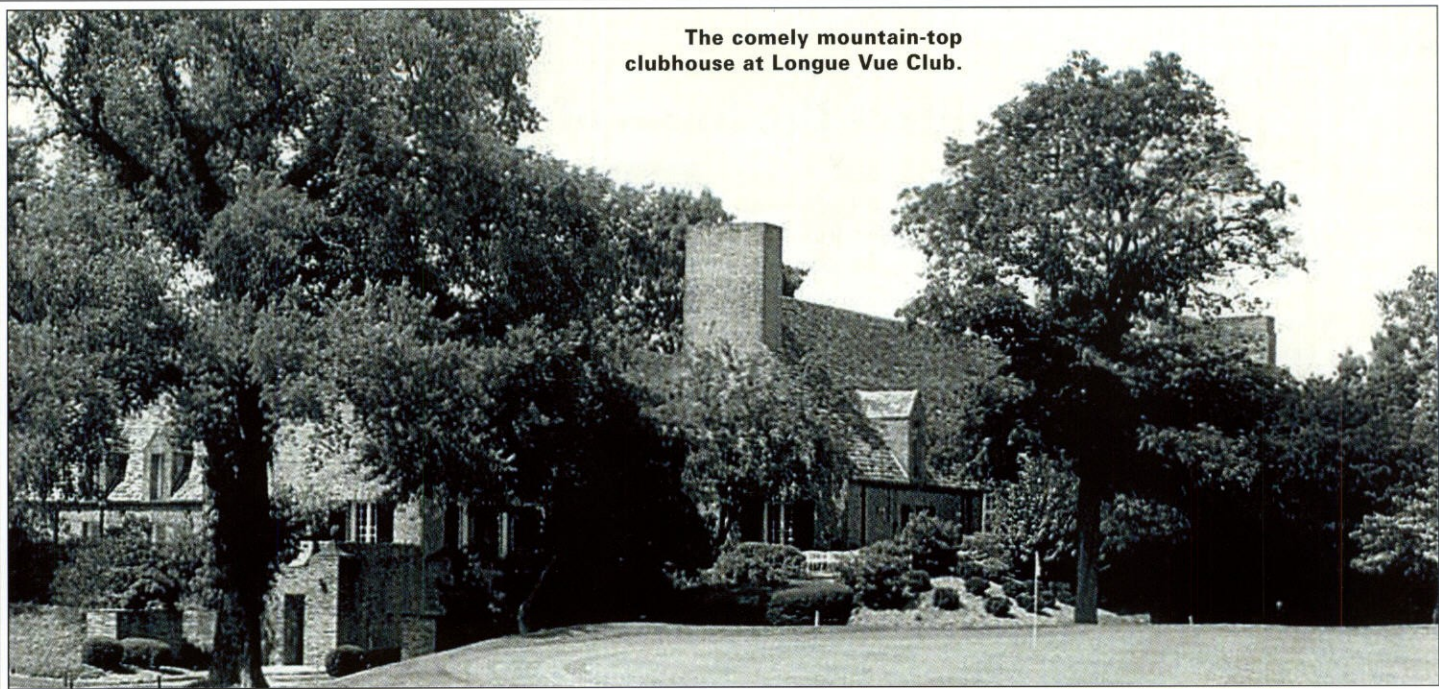
The mild fall enabled Frontier to accomplish a great deal before the winter snows. Frontier Vice President Pete Horrell expects

the club will reopen this spring with all its new bunkers and irrigation system in place.

"We have two separate crews, irrigation and renovation, moving through the course together, so as to minimize disturbance to the golf course," Horrell explained. "It requires careful planning to keep the existing irrigation system alive long enough to support our renovations to the golf course while simultaneously installing the new system."

Frontier is also working closely with superintendent Mike Wood to ensure that each new bunker is integrated seamlessly into the club's normal maintenance practices.

The comely mountain-top clubhouse at Longue Vue Club.



AMATEUR TO KAHKWA

Continued from page 1

national Women's Amateur Championship in 2004," said George Thomas, Kahkwa's general manager. "We will be ready to offer warm hospitality and a tough test of golf."

The "tough test of golf" comes courtesy of Ross, with an assist from Forse, Frontier and superintendent David Stull who, together, reconstructed the 17th and 18th greens, added 22 tees, rebuilt and leveled 12 more, restored 45 bunkers in the traditional style, and added 19 "new" ones.

Prior to visiting The Kahkwa Club, the Women's Amateur will be played this year at The Sleepy Hollow Country Club in Scarborough, N.Y., from Aug. 12-17, and at Philadelphia Country Club from Aug. 4-10, 2003.

Turning it around at John Prince Park

LAKE WORTH, Fla. — The John Prince Park driving range and par-3 course, located just south of West Palm Beach, has undergone a complete reconstruction by Frontier Construction Co.

Working with Doug Schroeder, who has entered into a long-term lease to operate the golf center here at John Prince Park, Frontier Construction secured the design services of Tom Pearson, formerly senior architect at Nicklaus Design.

Frontier subsequently handled a complete reconstruction of the facility, one of the few affordable practice centers in this part of Florida.

Work began Oct. 1 and finished by Hal-

REOPENING

COMMUNITY ASSET

loween. The short course, a par-3 routing, features all new greens and tees: 419 was used on the teeing grounds and green surrounds, Tifdwarf on the putting surfaces themselves.

Frontier also upgraded the irrigation system, added square footage to the existing practice tee and regrassed the practice putting green.

The Golf Center at John Prince Park reopened shortly after New Year's, completing a remarkably quick comeback story.

RENOVATION

COMPLETE

Frontier wraps up first N.E. assignment

NEW CANAAN, Ct.— Thanks to hard work and good weather, the Country Club of New Canaan will open this spring with all new bunkers, laser-leveled tees and, as a special bonus, a 5th green that rewards rather than punishes.

Working closely with architect Ron Forse and superintendent Mike Reeb, CGCS, Frontier Construction wrapped up a comprehensive bunker project here this autumn. Thanksgiving, to be exact.

"It was a good fall weather-wise," explained Richard Hagy, Frontier's project superintendent in New Canaan. "The work came out very nicely. Ron Forse is always easy to work for. He works very well with the contractor. He looks for the contractor to be creative so long as they fall within his guidelines."

The Country Club of New Canaan is one of the oldest courses in a state chock full of old courses. The original nine was laid out by Willie Park Jr. in 1909. Over the ensuing years, Walter Travis, Alfred Tull and Robert Trent Jones Sr. all had a

hand in designing the second nine and/or retouching Park's work.

The result was a mish-mash of bunker styles, each with its own antiquated drainage scheme. It was Forse's job to come up with a unifying design strategy; it was Frontier's job to make it a reality and equip every bunker with state-of-the-art drainage capabilities.

Frontier rebuilt 92 bunkers at the Country Club of New Canaan. Hagy's team also laser-leveled

nearly every tee, recontoured a couple fairways and, as the project was winding down, rebuilt the troublesome 5th green.

"This wasn't planned, but the 5th green had been a topic of conversation within the club for years," Hagy said. "If you had any backspin on your approach, the ball would roll all the way off the front of the putting surface. Because we were already in there, the Golf Committee and its

chairman, Bill Jennings, decided to get it done this fall.

"We ended up leaving the same contours but took out some of the pitch. This gave the superintendent more pin placements in front, where it really fell off. There are now more pin placements in the back, too."

The Country Club of New Canaan was Frontier's first project in New England, whose troublesome soil is the reason there are so many rock walls everywhere. "It was pretty rocky up there," Hagy laughed. "Once we got past the first four holes we didn't have any trouble."

Bunkers the focus of New Jersey project

MARLTON, N.J. — Frontier Construction Co. is working with architect Ron Forse here on the continuing upgrade of Indian Spring Country Club.

Town-owned Indian Spring is one of the most popular public tracks in southern New Jersey. Forse rebuilt the 18th green in 1998 to accommodate the club's lovely new clubhouse; the 4th and 11th greens were also renovated at that time. "Now it's time to do the rest of the course," said Forse, whose plans call for renovation of every bunker on the course and most of the tees. The greens won't be touched.

Work began in December of 2001, reports Frontier Project Manager Nick Mazzella.

RENOVATION

UNDERWAY

"Because this project is taking place in southern New Jersey where they expect to play all year long, we're go-

ing to concentrate extra hard on keeping the course open and playable," Mazzella said. "That means minimizing upheaval around the construction sites."

"That means closing the fewest number of holes possible and keeping haul roads to each location as short as possible."

"Some contractors," Forse added, "are very sloppy in their work. Not Frontier. They really do minimize the disturbance. Clients love a neat and clean construction outfit, and Frontier is definitely that."

Frontier Construction Co.
Box 84, Jones Mills, PA 15646



712 US Highway 1, Suite 301-36
North Palm Beach, Fla. 33408